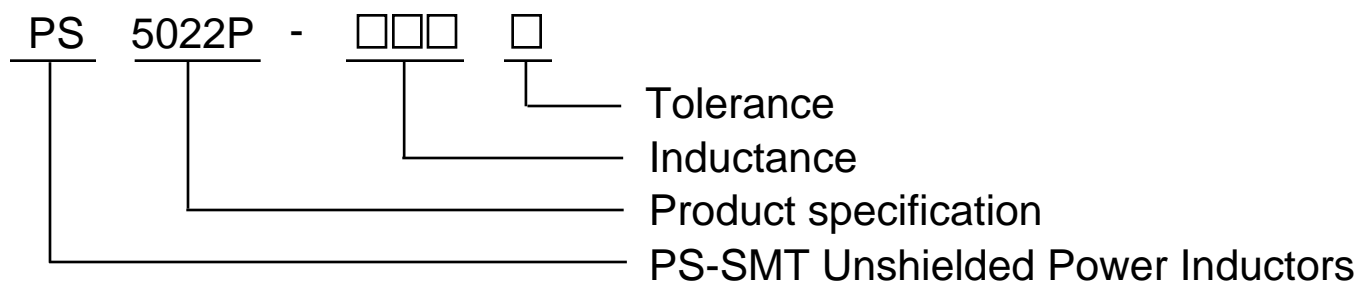




# SMT Power Inductors – PS5022P

## 产品型号

## PRODUCT IDENTIFICATION



### Tolerance:

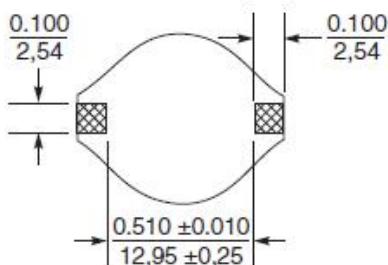
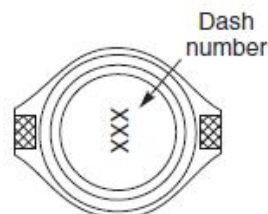
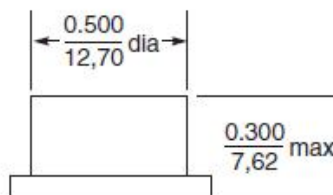
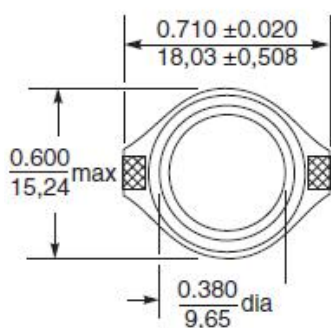
Code	Tolerance
102	1.0uH
103	10.0uH
104	100.0uH
105	1000.0uH
106	10000.0uH

### Inductance:

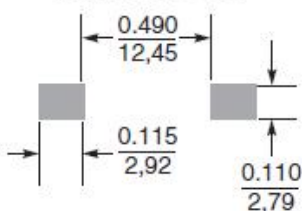
Code	Tolerance
J	± 5%
K	± 10%
L	± 15%
M	± 20%
N	± 30%

## 外观尺寸

## SHAPE AND DIMENSIONS



### Recommended Land Pattern





# 深圳市富尔电子科技有限公司

ADD: 广东省深圳市南山区后海工业七路8号

Http://www.frcoil.com

Tel/Fax: 0755-21606613/21606608

Email: xy@frcoil.com



## SMT Power Inductors – PS5022P

### 规格特性

### SPECIFICATIONS

Part Number	L ±20% <sup>1</sup> (μH)	DCR max (Ohms)	SRF typ (MHz)	Isat <sup>2</sup> (A)	Irms <sup>3</sup> (A)
PS5022P-102M	1.0	0.016	130	18.0	6.5
PS5022P-222M	2.2	0.023	70	14.0	5.0
PS5022P-332M	3.3	0.026	60	12.5	4.7
PS5022P-472M	4.7	0.028	40	11.5	4.4
PS5022P-562M	5.6	0.030	33	10.8	4.1
PS5022P-103M	10	0.040	30	8.0	3.9
PS5022P-153M	15	0.048	20	7.0	3.4
PS5022P-223M	22	0.059	18	6.0	3.1
PS5022P-333M	33	0.075	14	5.0	2.8
PS5022P-473M	47	0.097	10	4.0	2.4
PS5022P-683M	68	0.138	9.0	3.0	2.0
PS5022P-104M	100	0.207	7.0	2.4	1.7
PS5022P-154M	150	0.293	6.0	2.1	1.3
PS5022P-224M	220	0.47	5.0	1.9	1.1
PS5022P-274M	270	0.64	4.5	1.4	0.95
PS5022P-334M	330	0.78	4.0	1.1	0.86
PS5022P-474M	470	1.08	3.0	1.1	0.73
PS5022P-684M	680	1.40	2.5	0.96	0.64
PS5022P-824M	820	1.70	2.2	0.88	0.58
PS5022P-105M	1000	2.01	2.0	0.80	0.53

1. Inductance tested at 0.1 Vrms, 100 kHz, 0 Adc.

2. DC current at which the inductance drops 10% (typ) from its value without current.

3. Current that causes a 40°C temperature rise from 25°C ambient.

4. **Ambient temperature range:** -40°C to +85°C with Irms current  
+85°C to +125°C with derated current

5. **Storage temperature range:** Component: -40°C to +125°C  
Packaging: -40°C to +80°C

6. **Resistance to soldering heat:** Three reflows at >217°C for 90 seconds  
(+260°C ±5°C for 20 – 40 seconds), allowing parts to cool to room temperature between.

7. Electrical specifications at 25°C.

The PS5022P Series of magnetically shielded power inductors is designed for the higher current requirements of portable computers, video recorders and other DC-DC conversion applications.

They feature saturation current ratings as high as 18 Amps and rms current ratings up to 6.5 Amps. Low DC resistance (as low as 0.040 Ohms) keeps power losses to a minimum.



深圳市富尔电子科技有限公司

ADD: 广东省深圳市南山区后海工业七路8号

Http://www.frcoil.com

Tel/Fax: 0755-21606613/21606608

Email: xy@frcoil.com

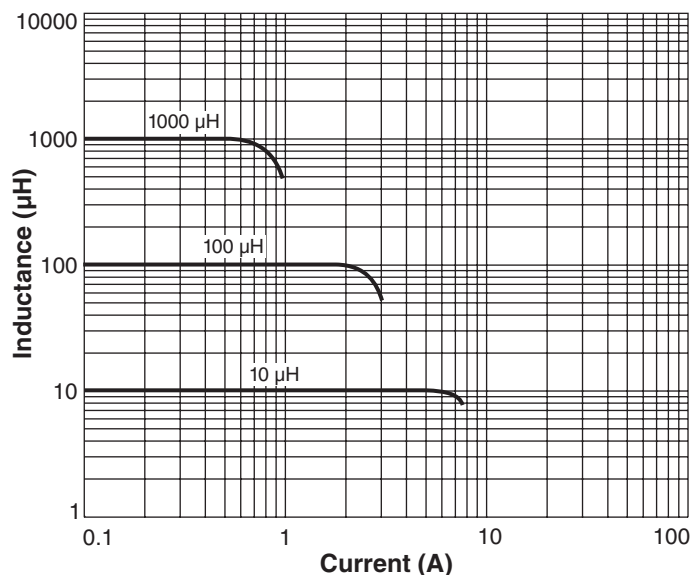


# SMT Power Inductors – PS5022P

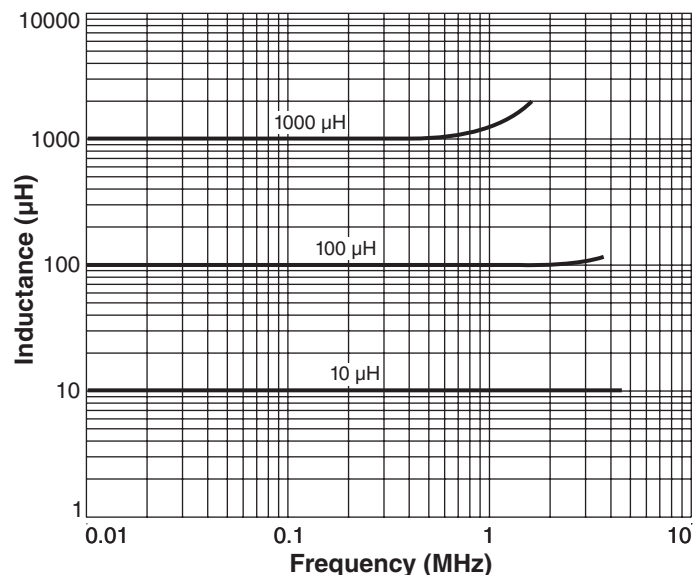
电气特性

TYPICAL ELECTRICAL CHARACTERISTICS

Typical L vs Current



Typical L vs Frequency



Irms Derating

